

Water Wise Gardening

The best plants for Hobsons Bay's conditions are indigenous grassland and coastal woodland plants because:

- They are best suited to the local basalt clay soils
- Generally need less water than exotic plants to survive
- Planting indigenous and native species also provides a natural habitat for local birds and insects.

In addition to this, you can:

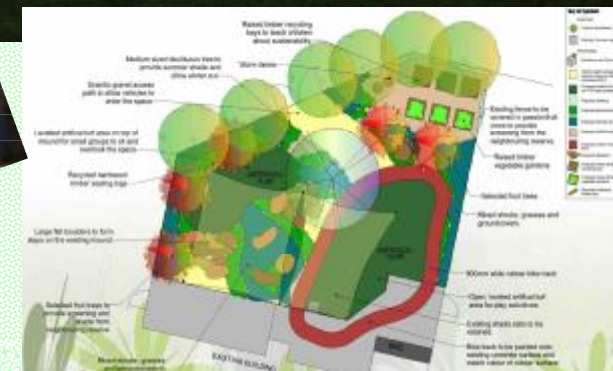
- Use soil conditioners and water crystal products to reduce the need for watering in dry seasons
- Use recycled or greywater to water your garden. Consider a stored greywater system and rebates available
- Install a rainwater tank to collect and use water on the garden or a rain garden
- Use a drip feed system to water or a trigger nozzle on the hose to maximise water efficiency.

As part of maintaining a sustainable centre at Seabrook, the rear garden has been redeveloped. The area has been transformed to include casual timber and rockery seats, artificial turf areas, rubberised track and walkways, and a small rock climbing step area.

Low maintenance water wise native, indigenous and edible plantings provide variety in the garden beds and are an example of trees, shrubs and groundcovers suitable for use in the domestic setting in and around the Seabrook area.

Seabrook Community Centre Rear Garden Plantings

The centre has had an upgrade of the rear yard to improve the facilities for all users. Please look around the yard and see the variety of native plantings which may be suitable for planting in your home garden. Plants which are hardy, dry tolerant and native to the western suburbs have been selected. Some plants are also indigenous to the area.



Recycled hardwood timber logs and rocks act as great play elements for children while also functioning as seating for small groups.

Plantings

No.	Common name	Botanical Name	Full Grown Size	
			Height mm	Width mm
1	Albany Woolly Bush	Adenanthos Sericens	2000	2500
2	Eureka Lemon	Citrus Limon eureka	3000	4000
3	Dawson River Bottlebrush	Callistemon viminalis 'Dawson River'	4000	6000
4	Coprosma 'Karo Red'	Coprosma 'Karo Red'	400	400
5	Correa 'Dusky Bells'	Correa 'Dusky Bells'	800	800
6	Red Flowering Gum	Corymbia ficifolia 'Summer Red'	6000	10000
7	Native Iris	Diets irioides	800	800
8	Whirling Butterflies	Gaura leuhmannii	1000	1000
9	Leucadendraon Gold	Leucadendraon 'Winter Gold'	800	1000
10	Seascape Mat-rush	Lomandra seascape	400	400
11	Creeping Boobiolla	Myoporum insulare	2000	300
12	Granny Smith Apple	Malus 'Granny Smith'	3000	4000
13	Red Fountain Grass	Pennisetum officinalis purpureum	1000	1000
14	Rosemary	Rosmarinus officinalis	600	600
15	Lambs Ears	Stachys byzantina	200	200



Albany Woolly Bush



Eureka Lemon



Callistemon



Correa



Native Iris



Leucadendraon



Rosemary



Lambs Ears



Lomandra